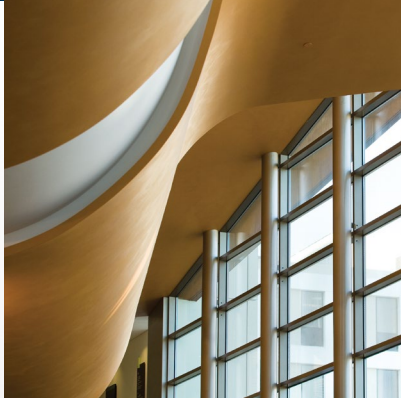




HP DESIGNJET

IMPACT

BUSINESS | CLIENTS | COMMUNITY



Making a Major Impact

“ When customers want quality, and they need it quick, the HP DesignJet Z6 PostScript® series is effectively a license to print money. ”

Julie Belanger, Founder and Vice President, The 111th Group



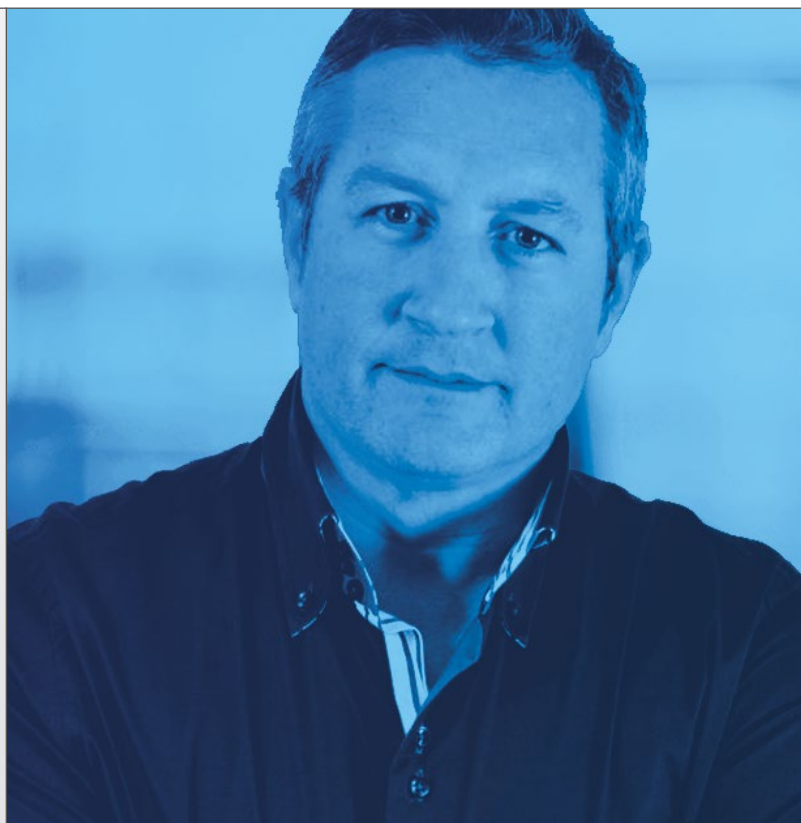
“ The HP DesignJet T830 36-in Multifunction Printer produces high-quality, large-format prints at speed and offers a wide range of extra features. We can easily wheel it around the office and the Android app makes choosing, editing, and printing files so easy—from any location. ”

Neil Geraghty, Surveyor, Duke Construction

Thanks to you, visions are fulfilled and brands are brought to life around the globe. You've helped us become one of the world's best-known names in printing. And now, we're empowering you to take things even further. Discover the impact of HP DesignJet large-format printers.

“ Thanks to this HP DesignJet printer, we are able to print four times faster, reaching an equivalent or even higher quality than in the past, and at a lower printing cost.

”
*Oscar Farrell, Head of Marketing,
Grupo AP Photo*



“ One of the biggest benefits of the HP DesignJet Z-series is its embedded spectrophotometer, which monitors color accuracy so we get consistency.

”
*Mark Kadonoff, Owner/CEO, RPG Square
Foot Solutions*

29 years ago, the HP DesignJet was born...



1970s & 1980s

HP small- and large-format **pen plotters** set the reference. A few years later, HP invents **Thermal Inkjet technology**, transforming the entire office printing experience



1990s

HP DesignJet printers are launched—fast, affordable, high-quality, monochrome and color printing transforms the way architects and engineers work



2000s

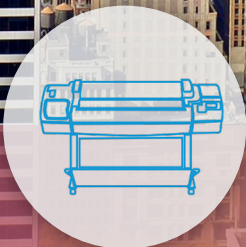
HP innovation continues with **pigment-based inks** delivering exceptional large-format photo quality for GIS and rendering

This led to a lifelong partnership with architects, designers, and creators, that continues to this day.



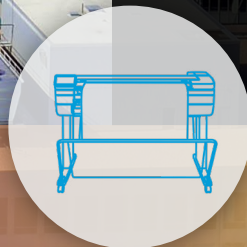
2019

Today the innovation continues with the **HP DesignJet XL series**, providing extreme reliability in the most immediate, robust, compact, and secure MFP.²



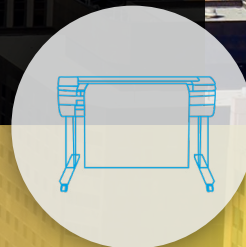
2010s

HP launches the first **web-connected and multifunction large-format printers**



2015

HP reinvents large-format printing with the **HP DesignJet T830 Multifunction Printer**, a robust, compact, Wi-Fi ready MFP with a built-in scanner at an unbeatable price¹



2018

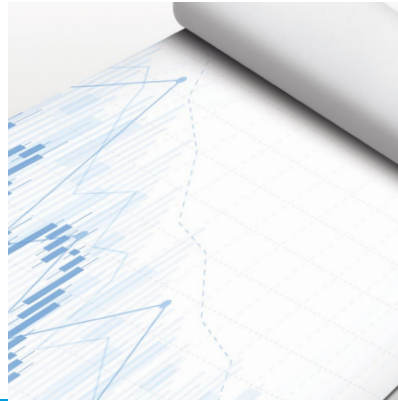
HP expands its proven HP DesignJet Z-series portfolio, reinforcing focus on high-impact graphics with **HP DesignJet Z9*/Z6 PostScript® Printers**

One Portfolio.
Impact for Every Industry.



You and your clients have exacting standards. The HP DesignJet portfolio of printers, as well as our software, inks, and printing materials are designed to meet and exceed them. Our HP DesignJet XL, Z-series, and T-series printers deliver the image quality, accuracy, speed, security and color necessary to satisfy even the most demanding clients, while keeping costs low and helping you win new and repeat business.





General In-office and Large-format Printing

Take on technical, graphics, or other applications with HP DesignJet printers that provide terrific ease-of-use and flexibility. Print different document types and sizes.



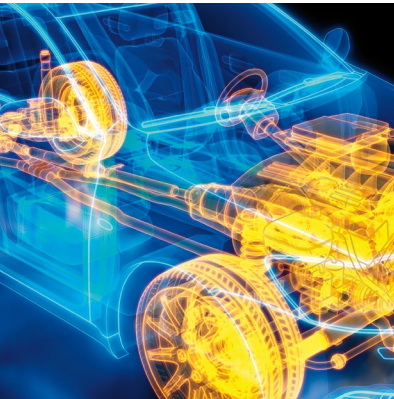
Geographic Information Systems, Exploration, Utilities, and Land Management

Print, copy, and scan drawings, satellite and aerial photos, maps, and more that communicate clearly with excellent image and line quality.



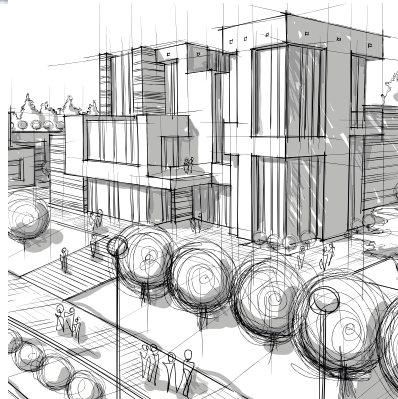
Reprographic and Graphics Print Service Providers

With HP DesignJet, reprographic houses can print, scan, and copy accurate and low-cost monochrome and color plans, plan sets, and renderings. You can quickly print posters, color proofs, POP displays, event signage, and more.



Manufacturing, Automotive, and Transportation

Print big, so even the smallest details get noticed. Produce large-format plans, drawings, renderings, and more—easily, quickly, and with vibrant quality.



Architecture, Engineering, and Construction

Print large-format drawings, schematics, renderings, and presentations with great ease, speed, and quality. HP DesignJet printers and MFPs can help build and grow your business.



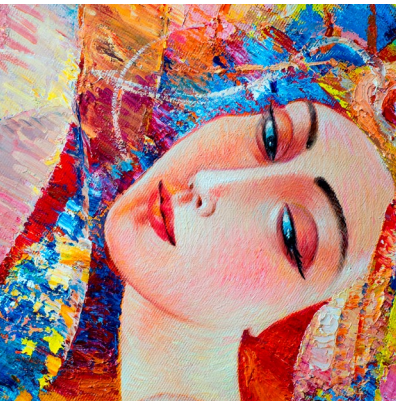
Temporary Retail POP and POS

Tailor your message to customers in stores with information, product displays, and sales offers delivered on demand. For signage with impact, choose large-format HP DesignJet printers.



Education

Encourage learning with large-format signs used for teaching, everyday communications, and more. HP DesignJet printers can help students make the grade.



Digital and Fine Art, and Graphic Design

Show off your digital design with large-format prints and presentations. Produce fine art prints and reproductions that demonstrate strict color accuracy and high quality.



Photography

Bring your vision to life with large-format photographs. HP DesignJet printers enable you to share and promote your work with professional photo quality and accuracy that are true to your vision.



High-quality POP and Exhibition Indoor Signage

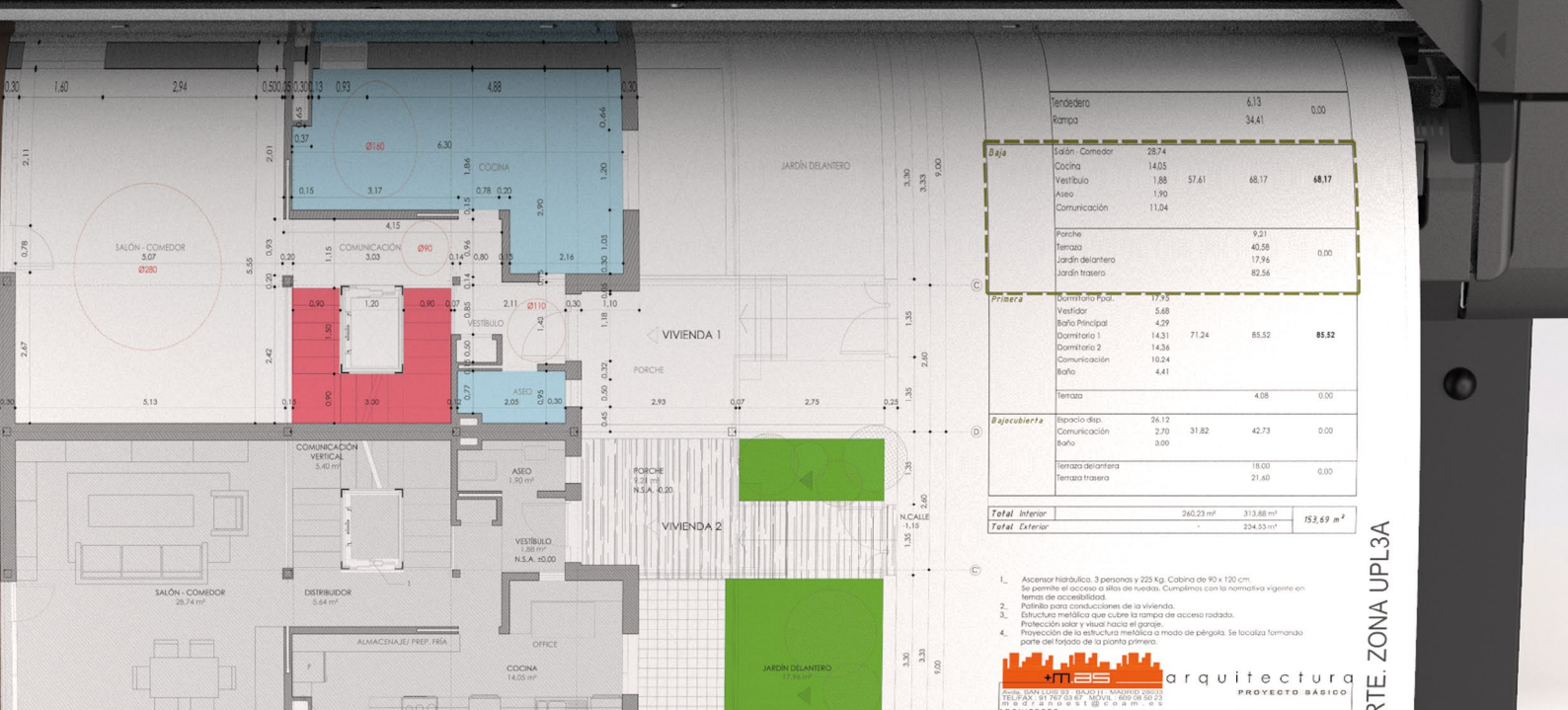
Create high-impact signage that lasts with HP DesignJet printers. Show off your brand with large-format prints that demonstrate superb quality along with durability and lasting results — and make a big impression.



Copy Shops and Quick Printers

Print more of the documents your customers want with HP large-format printers that are easy, flexible, fast, and cost effective. Take on a wide variety of jobs and deliver stunning results.

Impactful Solutions, Accessories, and Services



1. Ascensor Hidráulico. 3 personas y 225 Kg. Cabina de 90 x 120 cm.
 Se permite el acceso a sillas de ruedas. Cumplimos con la normativa vigente en
 temas de accesibilidad.
 2. Patrillado para conexiones de la vivienda.
 3. Estructura metálica que cubre la rampa de acceso rodada.
 Protección solar y vista hacia el garaje.
 4. Protección de la estructura metálica a modo de pérgola. Se localiza formando
 parte del forjado de la planta primera.

MS arquitectura
 PROYECTO BÁSICO

RTE: ZONA UPL3A

You

want to optimize your workflow. This means accomplishing more while saving money, managing your entire fleet (including non-HP large-format printers), and boosting productivity.

We

have created advanced software solutions and applications that work with HP DesignJet printers to do exactly what you want.



Job Creation



HP Applications Center³

A powerful solution for managing your orders with easy content creation and job submission. Bring in new customers with an easy design experience that's also easily integrated into your website.

Learn more at hpsolutionscenter.com

Job Submission



HP Click Printing Software

Print with just one click,⁴ and optimize media usage and costs.

Learn more at hp.com/go/clickdesignjet



HP DesignJet Universal Print Driver (UPD)

Provide IT teams with greater control and effectiveness. This single driver solution simplifies printer deployment and management, saving time and freeing IT to focus on innovation.

Learn more at hp.com/go/designjetupd



HP SmartStream Software

Make your large-format production workflow twice as efficient.⁵

Learn more at hp.com/go/smartstreamdesignjet



HP Mobile Printing

An easy way to print, scan, and share with your smartphone or tablet with our app HP Smart app.

Learn more at hp.com/go/designjetmobility

Fleet Management



HP Embedded Web Server

Enables you to view printer status information, change settings, and manage a limited number of printers at your computer.



HP Web Jetadmin

A web-based print management tool for businesses with more than 15 printers. Lets IT administrators install, configure, monitor, troubleshoot, and manage fleets.

Learn more at hp.com/go/wja



HP PrintOS

Get more out of your HP DesignJet printers, simplify and automate your print production processes, and collaborate in new ways to grow your business.

Learn more at www.hp.com/go/printos

Original HP Inks

Engineered to work as an optimized system with HP DesignJet printers to provide outstanding results and reliable, trouble-free performance. The result? Less downtime and lower printing costs. Use Original HP Inks to maximize printhead life and ensure full HP warranty protection.

Learn more at hp.com/go/originalhpinks

HP Vivid Photo Inks

Formulated to excel on photo, coated, and digital fine art papers, vibrant and durable HP pigment-based inks are designed exclusively for HP DesignJet Z-series printers.

HP Bright Office Inks

Formulated to excel on plain papers, these fast-drying inks are a blend of HP dye-based color inks and HP pigment-based black ink exclusively for use in HP DesignJet T-series printers.

HP Large-format Printing Materials

These materials provide consistently outstanding image quality and, with a wide range to choose from, you'll always find the right printing material for the job, or for almost any application. HP Premium printing materials are designed to provide best-in-class performance on key attributes like display permanence. For lower cost options, consider HP Everyday or HP Universal printing materials.

Learn more at HPLFMedia.com



HP DesignJet Support Services

Installation Service with Network Setup

Onsite installation and network setup of your HP DesignJet printer by an HP-authorized service technician.

Next Business Day Onsite Repair

Extend your HP warranty for two, three, four, and five years. An HP-authorized service technician typically arrives the next business day. Includes parts, material, and labor.

Post-warranty Services

Provides continued protection after your standard HP warranty or HP Care Pack Service expires. Offered in one- and two-year increments.

Learn more about HP DesignJet Support Services at hp.com/go/designjetsupport



EXPERIENCE THE
NEW STANDARD OF
RELIABILITY

Designed to deliver. Built to last.



HP DesignJet XL 3600 MFP

Specifications to Help You Choose



HP DesignJet XL 3600 Multifunction Printer series

Printer size/paper size	914 mm (36 inch)/A0						
Scan and copy functions	Yes						
PostScript® version available	Yes. Including post-editing features						
Print speed (line drawings)	20 sec/page on A1, 180 A1/D prints/hour						
Scan speed	Color: up to 7.62 cm/sec, (3 in/sec). Greyscale: up to 25.4 cm/sec (10 in/sec)						
Print languages (standard)	HP-GL/2, HP-RTL, TIFF, JPEG, CALS G4; Non-PostScript Printer: HP-GL/2, HP-RTL, TIFF, JPEG, CALS G4						
Additional print languages PostScript® SKU/PostScript® upgrade (optional)	PostScript® multifunction printer: Adobe PostScript® 3, Adobe PDF 1.7 Extension Level 3, HP-GL/2, HP-RTL, TIFF, JPEG, CALS G4, URF						
Scan formats (standard)	JPEG, TIFF						
Additional scan formats PostScript® upgrade (optional)	PDF, PDF/A for archiving Multi-page PDF						
Ink cartridges capacity	300-ml Original HP Ink cartridges						
Inks	HP Bright Office Inks						
Number of rolls/maximum roll length	Two automatic front-loading roll feeds; rolls up to 650ft (200m) long						
Compatible media core size	3 in default; 2 in optional						
Cut sheet support	Yes						
Media handling: output, capacity	Integrated output stacker, up to 100 A1/D-size capacity and integrated media bin						
Memory	128 GB (file processing), based on 8 GB RAM						
Interfaces (standard)	Gigabit Ethernet (1000Base-T)						
PIN printing	Yes						
Mobile printing	<table border="0"> <tr> <td>Email printing</td> <td>Yes</td> </tr> <tr> <td>In-OS printing</td> <td>Yes</td> </tr> <tr> <td>HP Smart App</td> <td>Yes</td> </tr> </table>	Email printing	Yes	In-OS printing	Yes	HP Smart App	Yes
Email printing	Yes						
In-OS printing	Yes						
HP Smart App	Yes						
Job accounting functionality	Yes						
Manage print queues	Yes						
HP Software solutions	Yes. HP SmartStream, HP Click Printing software, HP SmartTracker						
HP DesignJet Partner Link Alert Service	Yes						
Security	<table border="0"> <tr> <td>Device</td> <td>HP Secure Boot, whitelisting, TPM, LDAP and Kerberos authentication, Role Based Access Control, Front Panel Access Lock, Security event logging, Disable network ports and protocols, SIEM integration, SNMPv3</td> </tr> <tr> <td>Data</td> <td>802.1x compatibility, IPSec, TLS/SSL, self-encrypted HD, embedded FIPS 140 (for US only), Secure File Erase, Secure Disk Erase, NTLM v2</td> </tr> <tr> <td>Document</td> <td>Integrated pull-printing solution with Celiveo, Encrypted PIN Printing, PIN printing</td> </tr> </table>	Device	HP Secure Boot, whitelisting, TPM, LDAP and Kerberos authentication, Role Based Access Control, Front Panel Access Lock, Security event logging, Disable network ports and protocols, SIEM integration, SNMPv3	Data	802.1x compatibility, IPSec, TLS/SSL, self-encrypted HD, embedded FIPS 140 (for US only), Secure File Erase, Secure Disk Erase, NTLM v2	Document	Integrated pull-printing solution with Celiveo, Encrypted PIN Printing, PIN printing
Device	HP Secure Boot, whitelisting, TPM, LDAP and Kerberos authentication, Role Based Access Control, Front Panel Access Lock, Security event logging, Disable network ports and protocols, SIEM integration, SNMPv3						
Data	802.1x compatibility, IPSec, TLS/SSL, self-encrypted HD, embedded FIPS 140 (for US only), Secure File Erase, Secure Disk Erase, NTLM v2						
Document	Integrated pull-printing solution with Celiveo, Encrypted PIN Printing, PIN printing						

HP DesignJet Z-series



High-impact Quality

Our Z-series printers are perfect for digital print service providers, professional photographers, retail, graphic designers, and geographic information system (GIS) firms—those who expect to create professional photo quality prints with great consistency and precision. To find the right HP DesignJet Z-series printer for you, take a look at the impressive facts and figures on the next page.



Specifications to Help You Choose



HP DesignJet Z9+ Pro
64-in Printer

Printer size/paper size	1626 mm (64 inch)
Customer type	Print service providers, copy shops, photo labs, photo finishers, GIS
Ink cartridges	9 inks: C, M, Y, mK, pK, G, CR, CG, CB (GE - optional)
Inks	HP Vivid Photo Inks
Applications	Photos, canvas, backlits, POP graphics/displays, posters, banners, exhibition, event graphics, maps, and orthophotos with professional photographic quality
Media handling - input	Automatic roll feeding; Two rolls feed and smart roll switching (with Multifunction roll accessory)
Media handling - output	Media bin, automatic horizontal cutter (cuts all HP Z-series printer qualified media including most canvas), optional 64-in take-up reel
Print resolution	Up to 2400 x 1200 optimized dpi
Print speed	Best: 14.1 m ² /hr (152 ft ² /hr) on glossy media ⁷ Fast: 98 m ² /hr (1055 ft ² /hr) on plain media
Adobe PostScript®/PDF ⁸	Optional
HP Professional PANTONE® Color Emulation	Available with PostScript®/PDF upgrade Kit ⁸
HP Click printing software	Yes
Virtual Memory & HDD capacity	Virtual memory: 128 GB (based on 4 GB RAM) Self-encrypted HDD capacity: 500 GB
HP Embedded spectrophotometer	Yes
Ability to print without RIP	Yes
Security Device	HP Secure Boot, whitelisting, signed firmware upgrade, Role Based Access Control, front panel access lock, disable protocols, SNMPv3
Data	IIPSec, SSL/TLS, 802.1x, secure boot, Secure Disk Erase NIST 800-99, X.509 certificate management, disable ports and protocols
Document	PIN printing
Fleet security management	HP Web JetAdmin, HP JetAdvantage Security Manager

HP DesignJet Z-series: High-impact Quality



HP DesignJet Z9+
PostScript® Printer Series

HP DesignJet Z6
PostScript® Printer Series

HP DesignJet Z6810
Production Printer

610 mm (24 inch) 1118 mm (44 inch)	610 mm (24 inch) 1118 mm (44 inch)	1067 mm (42 inch)
Photo labs, photo finishers, designers, print service providers	GIS map creators/users, print service providers, and retailers for both graphics and technical applications	Copy shops, print service providers, photo labs, photo finishers, and GIS
9 inks: C, M, Y, mK, pK, G, CR, CG, CB (GE - optional)	6 inks: C, M, Y, mK, pK, CR	8 inks: LC, M, Y, mK, pK, LG, IM, CR
HP Vivid Photo Inks	HP Vivid Photo Inks	HP Vivid Photo Inks
Photos, canvas, backlights, POP graphics/displays, posters, banners, maps, and orthophotos with professional photographic quality	Maps and technical drawings, POP graphics/displays, posters and banners	Posters, banners, mockups, photos, digital fine art, proofs, displays, POP/POS, light boxes – film, exhibition, event graphics
Two automatic roll feeds and smart roll-switching (on Z9+dr model), ⁶ roll feed, sheet feed	Two automatic roll feeds and smart roll-switching (on Z6dr model), ⁶ roll feed, sheet feed	Roll feed
Media bin, automatic horizontal cutter (cuts all HP Z-series printer qualified media including most canvas), vertical trimmer (on Z9+dr model), ⁶ optional take-up reel on 44-in models	Media bin, automatic horizontal cutter (cuts all HP Z-series printer qualified media including most canvas), vertical trimmer (on Z6dr model), ⁶ optional take-up reel on 44-in models	Automatic horizontal cutter, optional take up reel
Up to 2400 x 1200 optimized dpi	Up to 2400 x 1200 optimized dpi	Up to 2400 x 1200 optimized dpi
24-in model Best: 3.5 m ² /hr (38 ft ² /hr) on glossy media ⁷ 44-in model Best: 4.5 m ² /hr (48 ft ² /hr) on glossy media ⁷	24-in model Fast: 66.9 m ² /hr (720 ft ² /hr) on plain media 44-in model Fast: 80.5 m ² /hr (866 ft ² /hr) on plain media	42-in model Best: 11 m ² /hr (118 ft ² /hr) on glossy media ⁷
Yes	Yes	Optional
Yes	Yes	Available with PostScript®/PDF upgrade Kit ⁸
Yes	Yes	Yes
Virtual memory: 128 GB (based on 4 GB RAM) Self-encrypted HDD capacity: 500 GB	Virtual memory: 128 GB (based on 4 GB RAM) Self-encrypted HDD capacity: 500 GB	Virtual memory: 64 GB (based on 1 GB RAM) HDD capacity: 500 GB
Yes	No	Yes
Yes	Yes	Yes
HP Secure Boot, whitelisting, signed firmware upgrade, Role Based Access Control, front panel access lock, disable protocols, SNMPv3	HP Secure Boot, whitelisting, signed firmware upgrade, Role Based Access Control, front panel access lock, disable protocols, SNMPv3	Control Panel Access Lock, disable protocols
IPSec compatibility, TLS/SSL, IPv4 & IPv6 compatibility, CA/JD certificates, 802.1x compatibility, Self-encrypted HDD, secure file and disk erase	SNMPv3 compatibility, IPSec compatibility, TLS/SSL, IPv4 & IPv6 compatibility, CA/JD certificates, 802.1x compatibility, Self-encrypted HDD, secure file and disk erase	SNMPv3 compatibility, IPSec, secure disk, file erase, certificates management, and SSL
PIN printing	PIN Printing	No
HP Web JetAdmin, HP JetAdvantage Security Manager	HP Web JetAdmin, HP JetAdvantage Security Manager	HP Web JetAdmin, HP JetAdvantage Security Manager

HP DesignJet T-series

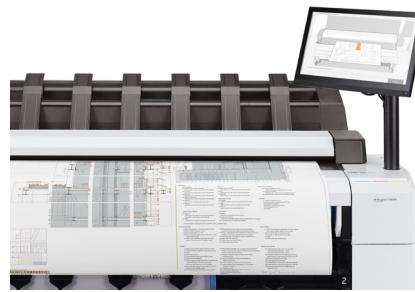


High-impact Accuracy

These printers are ideal for architectural, engineering, and construction companies (AEC) and geographic information system (GIS) firms. Also, MCAD professional users and workgroups and government agencies. If you need to print, scan, or copy maps, technical drawings, or renderings with precise, accurate line quality and crisp text, be sure to review the specifications on the following pages.



Specifications to Help You Choose



HP DesignJet T2600 Multifunction Printer Series

Printer size/paper size	914 mm (36 inch)/A0								
Scan and copy functions	Yes								
PostScript® /PDF version available	Yes								
Print speed (PostScript® /PDF)	20 sec/page on A1, 180 A1 prints/hour								
Scan speed	Color: up to 6.35 cm/sec, (2.5 in/sec). Grayscale: up to 19.05 cm/sec (7.5 in/sec) Scan: Up to 3 in/sec (color, 200 dpi), up to 10 in/sec (grayscale, 200 dpi); Scan: Up to 7.62 cm/sec (color, 200 dpi), up to 25.4 cm/sec (grayscale, 200 dpi);								
Print languages (standard)	Basic multifunction printer: HP-GL/2, HP-RTL, TIFF, JPEG, CALS G4, URF								
Additional print languages PostScript® SKU/PostScript® upgrade (optional)	PostScript® multifunction printer: Adobe PostScript® 3, Adobe PDF 1.7 Extension Level 3, HP-GL/2, HP-RTL, TIFF, JPEG, CALS G4, URF								
Scan formats (standard)	TIFF, JPEG, Multipage TIFF								
Additional scan formats PostScript® upgrade (optional)	PDF, PDF/A, Multipage PDF								
Ink cartridges capacity	130- and 300-ml Original HP Ink cartridges								
Inks	HP Bright Office Inks								
Number of rolls/maximum roll length	T2600dr: Two automatic front-loading roll feeds; rolls up to 91.4-m (300-ft) long T2600: One automatic front-loading roll feed; rolls up to 91.4-m (300-ft) long								
Compatible media core size	2 inch; 3 inch only with optional accessory								
Cut sheet support	Yes								
Media handling: output, capacity	Integrated output stacker, up to 100 A1/D-size capacity and integrated media bin								
Memory	500GB Self-Encrypted HDD with a memory of 128GB for job processing based on 8 GB of RAM								
Interfaces (standard)	Gigabit Ethernet (1000Base-T), Hi-Speed USB 2.0 certified host connector								
PIN printing	Yes								
Mobile printing	<table border="0"> <tr> <td>Email printing</td> <td>Yes</td> </tr> <tr> <td>In-OS printing</td> <td>Yes</td> </tr> <tr> <td>HP Smart App</td> <td>Yes</td> </tr> <tr> <td>Remote Printing</td> <td>No</td> </tr> </table>	Email printing	Yes	In-OS printing	Yes	HP Smart App	Yes	Remote Printing	No
Email printing	Yes								
In-OS printing	Yes								
HP Smart App	Yes								
Remote Printing	No								
Job accounting functionality	Yes								
Manage print queues	Yes								
HP SmartStream for HP DesignJet printers	No								
HP DesignJet Partner Link Alert Service	Yes								
Security	<table border="0"> <tr> <td>Device</td> <td>HP Secure Boot, whitelisting, TPM, LDAP and Kerberos authentication, Role Based Access Control, Front Panel Access Lock, Security event logging, Disable network ports and protocols, SIEM integration, SNMPv3</td> </tr> <tr> <td>Data</td> <td>802.1x compatibility, IPsec, TLS/SSL, self-encrypted HD, embedded FIPS 140 (for US only), Secure File Erase, Secure Disk Erase, NTLM v2</td> </tr> <tr> <td>Document</td> <td>Integrated pull-printing solution with Celiveo, Encrypted PIN Printing, API Netgard after the Celiveo solution it's optional</td> </tr> </table>	Device	HP Secure Boot, whitelisting, TPM, LDAP and Kerberos authentication, Role Based Access Control, Front Panel Access Lock, Security event logging, Disable network ports and protocols, SIEM integration, SNMPv3	Data	802.1x compatibility, IPsec, TLS/SSL, self-encrypted HD, embedded FIPS 140 (for US only), Secure File Erase, Secure Disk Erase, NTLM v2	Document	Integrated pull-printing solution with Celiveo, Encrypted PIN Printing, API Netgard after the Celiveo solution it's optional		
Device	HP Secure Boot, whitelisting, TPM, LDAP and Kerberos authentication, Role Based Access Control, Front Panel Access Lock, Security event logging, Disable network ports and protocols, SIEM integration, SNMPv3								
Data	802.1x compatibility, IPsec, TLS/SSL, self-encrypted HD, embedded FIPS 140 (for US only), Secure File Erase, Secure Disk Erase, NTLM v2								
Document	Integrated pull-printing solution with Celiveo, Encrypted PIN Printing, API Netgard after the Celiveo solution it's optional								

HP DesignJet T-series: High-impact Accuracy



HP DesignJet T1600 Printer Series



HP DesignJet T1700 Printer Series

914 mm (36 inch)/A0	1118 mm (44 inch)/B0+
Yes	No
Yes (through PostScript® upgrade)	Yes
180 D/h and 170 A1/h 19.3 sec/A1. Fast Mode Economode ON	26 sec/page on A1/D, 116 A1/D prints/hour
No	No
Basic multifunction printer: HP-GL/2, HP-RTL, TIFF, JPEG, CALS G4	Basic Printer: HP-GL/2, TIFF, JPEG, URF, CALS G4
Adobe PostScript 3, Adobe PDF 1.7, HP-GL/2, HP-RTL, TIFF, JPEG, CALS G4	PostScript® Printer: Adobe PostScript® 3, Adobe PDF 1.7 ext 3, HP-GL/2, TIFF, JPEG, URF, CALS G4
No	No
No	No
130- and 300-ml Original HP Ink cartridges	130- and 300-ml Original HP Ink cartridges
HP Bright Office Inks	HP Bright Office Inks
T1600dr: Two automatic front-loading roll feeds; rolls up to 91.4-m (300-ft) long T1600: One automatic front-loading roll feed; rolls up to 91.4-m (300-ft) long	T1700: One automatic roll feed; rolls up to 91.4-m (300-ft) long T1700dr: Two automatic roll feeds; rolls up to 91.4-m (300-ft) long
2 inch; 3 inch only with optional accessory	2 inch; 3 inch only with optional accessory
Yes	Yes
Integrated output stacker, up to 100 A1/D-size capacity and integrated media bin	Integrated media bin
500GB Self-Encrypted HDD with a memory of 128GB for job processing based on 4 GB of RAM	500GB Self-Encrypted HDD with a memory of 128GB for job processing based on 4 GB of RAM
Gigabit Ethernet (1000Base-T)	Ethernet, Fast Ethernet, Gigabit Ethernet, 10/100/1000Base-T Ethernet (802.3, 802.3u, 802.3ab); USB Type-A host port
Yes	Yes
Yes	Yes
Yes	Yes
Yes	Yes
No	No
Yes	Yes
Yes	Yes
No	No
Yes	Yes
HP Secure Boot, whitelisting, TPM, LDAP and Kerberos authentication, Role Based Access Control, Front Panel Access Lock, Security event logging, Disable network ports and protocols, SIEM integration, SNMPv3	HP Secure Boot, whitelisting, disable network ports and protocols, HP Signed firmware upgrade, Role Based Access Control, Front Panel Access Lock
802.1x compatibility, IPSec, TLS/SSL, self-encrypted HD, embedded FIPS 140 (for US only), Secure File Erase, Secure Disk Erase, NTLM v2	802.1x compatibility, IPSec, TLS/SSL, self-encrypted HD, SNMP v3, embedded FIPS 140 (for US only), Secure File Erase, Secure Disk Erase
Integrated pull-printing solution with Celiveo, Encrypted PIN Printing, API Netgard after the Celiveo solution it's optional	Integrated pull-printing solution with Celiveo, PIN printing

Specifications to Help You Choose



HP DesignJet T830 Multifunction Printer



HP DesignJet T730 Printer

Printer size/paper size	610 mm (24 inch) and 914 mm (36 inch)/A1 and A0	914 mm (36 inch)/A0
Scan and copy functions	Yes	No
PostScript® version available	No	No
Print speed (line drawings)	24-in: 26 sec/page on A1, 81 A1 prints/hour / 36-in: 26 sec/page on A1, 82 A1 prints/hour	25 sec/page on A1, 82 A1 prints/hour
Scan speed	Color: up to 3.81 cm/sec (1.5 in/sec) Greyscale: up to 11.43 cm/sec (4.5 in/sec)	No
Print languages (standard)	TIFF, JPEG, CALS G4, HP-GL/2, HP-RTL, URF	HP-GL/2, HP-RTL, TIFF, JPEG, CALS G4, URF
Additional print languages PostScript® SKU/PostScript® upgrade (optional)	No	No
Scan formats (standard)	JPEG, TIFF, PDF	No
Additional scan formats PostScript® upgrade (optional)	No	No
Ink cartridges capacity	69- and 300-ml matte black ; 40-, 130-, and 300-ml yellow, magenta, and cyan Original HP Ink cartridges	69- and 300-ml matte black ; 40-, 130-, and 300-ml yellow, magenta, and cyan Original HP Ink cartridges
Number of rolls/maximum roll length	One roll feed; rolls up to 45.7-m (150-ft) long	One roll feed; rolls up to 45.7-m (150-ft) long
Compatible media core size	2 inch	2 inch
Cut sheet support	Yes	Yes
Media handling: output, capacity	Stand with output bin	Stand with output bin
Memory	1 GB	1 GB
Interfaces (standard)	Gigabit Ethernet (1000Base-T), Wi-Fi	Gigabit Ethernet (1000Base-T), Wi-Fi
PIN printing	No	No
Mobile printing		
Email printing	Yes	Yes
In-OS printing	Yes	Yes
HP Smart App	Yes	Yes
Remote Printing	No	No
Job accounting functionality	No	No
Manage print queues	No	No
HP SmartStream for HP DesignJet printers	No	No
HP DesignJet Partner Link Alert Service	No	No
Security		
Device	Disable network ports Protocols	Disable network ports Protocols
Data	Certificates Management, TLS/SSL, 802.1x compatibility, NTLM	Certificates Management, TLS/SSL, 802.1x compatibility

HP DesignJet T-series: High-impact Accuracy



HP DesignJet Studio Printer Series

HP DesignJet T600 Printer Series

HP DesignJet T200 Printer Series

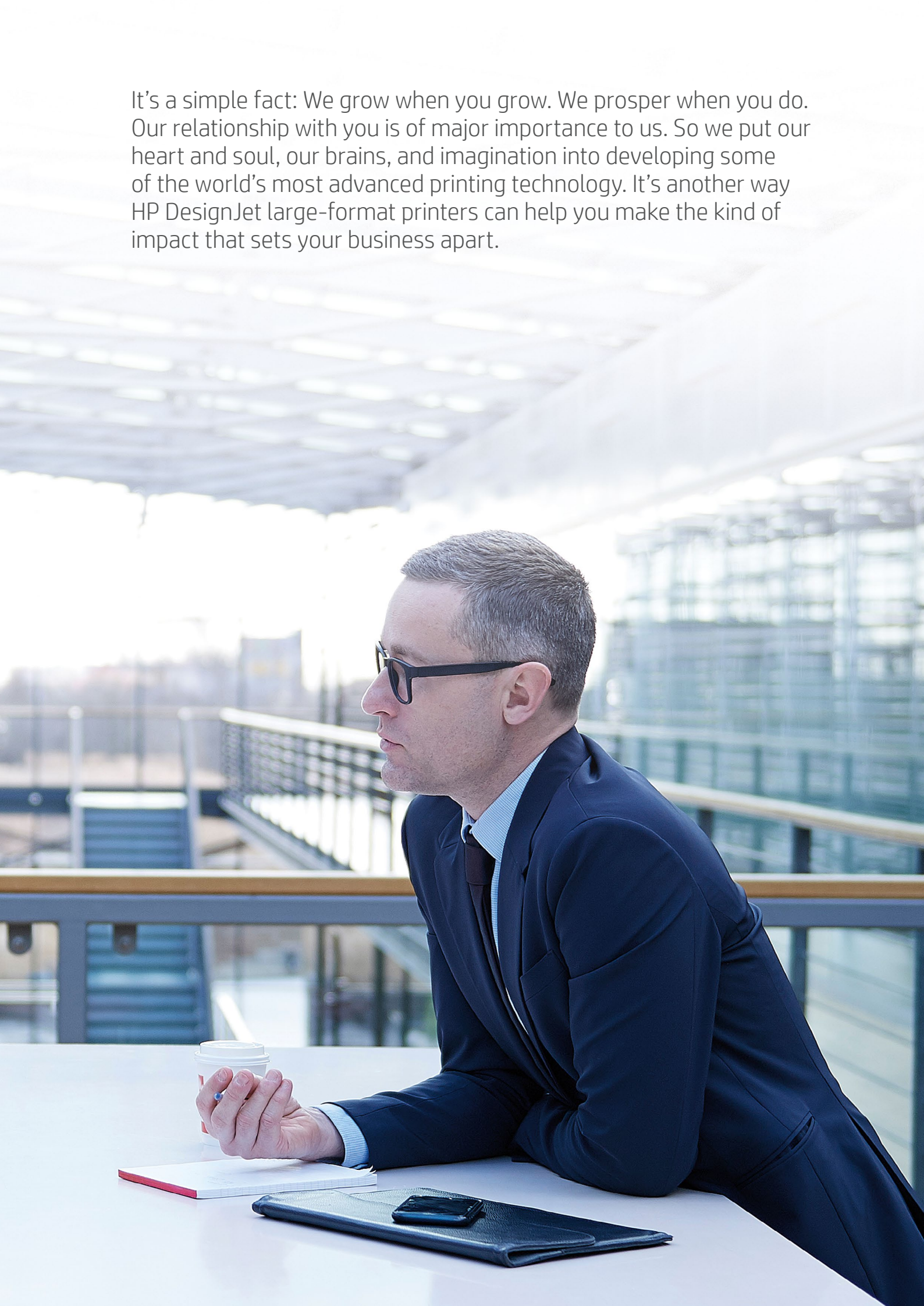
610 mm (24 inch)/A1 and 914 mm (36 inch)	610 mm (24 inch)/A1 and 914 mm (36 inch)	610 mm (24 inch)/A1
No	No	No
No	No	No
36-in: 25 sec/page on A1/D, 82 A1/D prints per hour* 24-in: 26 sec/page on A1/D, 81 A1/D prints per hour*	T650: 36-in: 25 sec/page on A1/D; 82 A1/D prints/hour* 24-in: 26 sec/page on A1/D; 81 A1/D prints/hour* T630: 36in: 30 sec/page on A1/D; 76 A1/D prints/hour* 24in: 30 sec/page on A1/D; 76 A1/D prints/hour*	T250: 30 sec/page on A1/D; 76 A/D1 prints/hour* T230: 35 sec/page on A1/D; 68 A/D1 prints/hour* T210: 45 sec/page on A1/D; 59 A/D1 prints/hour*
No	No	No
HP-GL/2, HP-RTL, JPEG, CALS G4, URF	HP-GL/2, HP-RTL, JPEG, CALS G4, URF	JPEG, URF
No	No	No
No	No	No
No	No	No
80-ml and 38-ml matte black; 29-ml yellow, magenta, and cyan Original HP ink cartridges	80-ml and 38-ml matte black; 29-ml yellow, magenta, and cyan Original HP ink cartridges	80-ml and 38-ml matte black; 29-ml yellow, magenta, and cyan Original HP ink cartridges
One roll feed; rolls up to 45.7-m (150-ft) long	One roll feed; rolls up to 45.7-m (150-ft) long	One roll feed; rolls up to 45.7-m (150-ft) long
2 inch	2 inch	2 inch
Yes	Yes	Yes
Stand with output bin / Integrated bin	Stand with output bin	Optional media bin
1 GB	1 GB	512 MB
Gigabit Ethernet (1000Base-T), Hi-Speed USB 2.0, Wi-Fi 802.11	Gigabit Ethernet (1000Base-T), Hi-Speed USB 2.0, Wi-Fi 802.11	Gigabit Ethernet (1000Base-T), Hi-Speed USB 2.0, Wi-Fi 802.11
No	No	No
Yes	Yes	Yes
Yes	Yes	Yes
Yes	Yes	Yes
Yes	Yes	Yes
No	No	No
No	No	No
No	No	No
No	No	No
N/A	N/A	N/A
N/A	N/A	N/A

* Mechanical printing time. Printed in Fast mode with Economode on, using HP Bright White Inkjet Paper (bond) and Original HP inks. Actual performance may vary based on a variety of conditions, including but not limited to network configuration.

The Impact of Advanced Technology



It's a simple fact: We grow when you grow. We prosper when you do. Our relationship with you is of major importance to us. So we put our heart and soul, our brains, and imagination into developing some of the world's most advanced printing technology. It's another way HP DesignJet large-format printers can help you make the kind of impact that sets your business apart.





High-definition Nozzle Architecture (HDNA) and HP Dual Drop Technology

Provides twice the nozzle density of previous HP DesignJet Z-series printheads. Using dual drop technology, high-definition HP printheads produce a combination of large drop sizes (7 pL) for robust area fills at fast speeds, while small drop sizes (3 pL) reduce visible grain—eliminating the need for light-colored inks.



Adobe PostScript®

Enables you to print any document—text, graphics, images, and color—from any computing platform to any supported device, at the highest quality possible. Delivers optimized quality for PANTONE® color emulation, and eliminates errors, printing complex PDFs with different layers.



Adobe PDF Print Engine®

This high-speed, high-fidelity print platform renders PDF job content, converting graphics, text, and images to rasters for driving HP DesignJet large-format printers. It provides tile parallel processing, extended spot color handling, and the smoothest shades ever.



HP Pixel Control

This breakthrough moves from building color output, ink layer by ink layer, to directly choosing color at the pixel level. This results in smoother transitions, richer and deeper colors, accurate spot colors, and sharper details.



HP Embedded Spectrophotometer®

Integrated with some HP DesignJet printers, this precision instrument provides a high degree of color accuracy and color consistency from the first print to the last one—and from printer to printer—regardless of paper types.



Integrated Vertical Trimmer

The industry's first integrated vertical trimmer, this inline finishing option lets you cut post-processing labor time by up to 20%.¹⁰



HP Professional PANTONE® Emulation

Matches colors as closely as possible to the original PANTONE® colors by taking into account your printer and paper type. Designed to produce emulations similar to those set up manually by prepress professionals.



HP Double Swath Technology

Unique to HP, this advanced technology provides breakthrough speed and performance thanks to two sets of printheads, creating a wide print swath and high firing frequency.



HP Optical Media Advance Sensor (OMAS)

Enables you to print at top speeds and still get outstanding results. This breakthrough technology improves paper-advance control and accuracy, so the printer can print at higher speeds across multiple environmental conditions without impairing image quality.



Designed with the Environment in Mind

Most HP DesignJet large-format printers are Energy STAR® certified, which means they meet strict energy efficiency guidelines without sacrificing performance. Most are also EPEAT® registered,⁹ which means they have a reduced environmental impact across their lifecycle. Learn more at hp.com/sustainability

DEFEND YOUR DEVICES, DATA, AND DOCUMENTS

Critical gaps can occur at multiple points within your imaging and printing environment. Once you understand these vulnerabilities, you can more easily reduce the risks.



IMAGING AND PRINTING VULNERABILITY POINTS



PROTECT YOUR DEVICE



CONTROL PANEL

Users can exploit device settings and functions



DEFAULT PASSWORD

Printers can come with simple default passwords that can be easily compromised



BIOS AND FIRMWARE

Compromised firmware can open a device and network to attack



PROTECT YOUR DATA



STORAGE MEDIA

Printers store sensitive information that can be at risk



CAPTURE

Unsecured MFPs can be used to send scans anywhere



OUTPUT TRAY

Abandoned documents can fall into the wrong hands



PROTECT YOUR ENVIRONMENT



MANAGEMENT

Undetected security gaps put data at risk



NETWORK

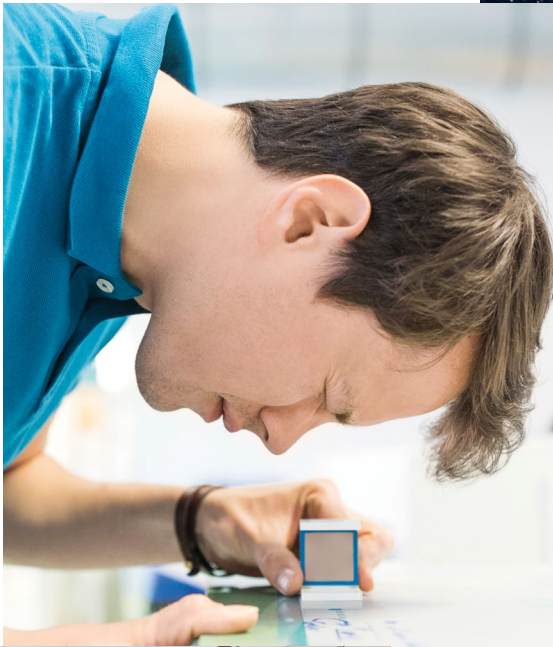
Jobs can be intercepted as they travel to/from a device



PORTS AND PROTOCOLS

Unsecured ports (USB or network) or protocols (FTP or Telnet) put devices at risk

Making an Impact on Growth



You have big goals and dreams for your business

HP DesignJet large-format printers are uniquely able to help you achieve them. These remarkable devices represent a major leap forward in large-format printers and include some of the world's most sophisticated printer technology and features.

HP DesignJet printers will help you operate more efficiently, increase productivity, and reduce costs—all while meeting the highest standards of print quality. In short, they'll help elevate your business to new heights of prosperity. No wonder businesses eager to grow are selecting HP DesignJet.

There's more to learn about these powerful printers—much more.

For details, visit hp.com/go/designjet

¹ Based on 36-inch Wi-Fi integrated MFPs available in the market as of September, 2015.

² Applicable to the HP DesignJet XL 3600 Multifunction Printer series. Advanced embedded security features are based on HP review of 2019 published embedded security features of competitive printers, as of February 2019.

³ Requires an HP Applications Center account, Internet connection, and connected Internet-capable device. For more information, see hppublicationscenter.com.

⁴ Once image is selected, one-click printing when printing the entire file without any modifications to the print settings. Applicable to PDF, JPEG, TIFF, DWF, and HP-GL/2 files.

⁵ Using HP SmartStream software, job preparation and processing can be completed in 50% of the time. Conclusion based on an HP internal test, March 2015 comparing select competitor printers and software to HP SmartStream software with the HP DesignJet T7100 Printer and HP PageWide XL printers, measuring the time required to extract pages from a 50-page document and print them using several printers compared with using equivalent software programs.

⁶ Vertical trimmer and dual rolls included with the HP DesignJet Z9+dr 44-in and Z6dr 44-in PostScript® Printers with V-Trimmer only. Up to 20% reduction in post-processing labor time based on internal HP testing compared to HP DesignJet Z9+dr and Z6dr series printers without built-in vertical trimmer.

⁷ Maximum rate of output for color image 100% color coverage. Printed on maximum roll size, with Original HP Vivid Photo Inks.

⁸ May require purchase of PostScript® models or optional HP DesignJet PostScript®/PDF Upgrade Kit.

⁹ EPEAT® registered where applicable. EPEAT registration varies by country. See epeat.net for registration status by country.



Brochure | HP DesignJet

Adobe and Adobe PostScript 3 are trademarks of Adobe Systems Incorporated.
ENERGY STAR and the ENERGY STAR mark are registered trademarks owned by the U.S. Environmental Protection Agency.
PANTONE is the property of Pantone, Inc.

© Copyright 2017, 2021 HP Development Company, L.P. The information contained herein is subject to change without notice. The only warranties for HP products and services are set forth in the express warranty statements accompanying such products and services. Nothing herein should be construed as constituting an additional warranty. HP shall not be liable for technical or editorial errors or omissions contained herein.

4AA4-5696EER, July 2021